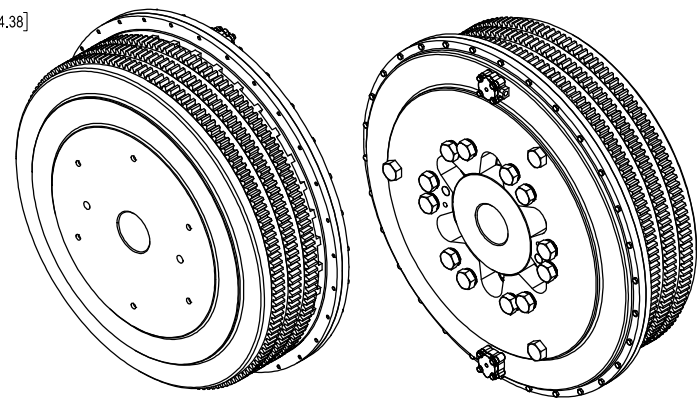


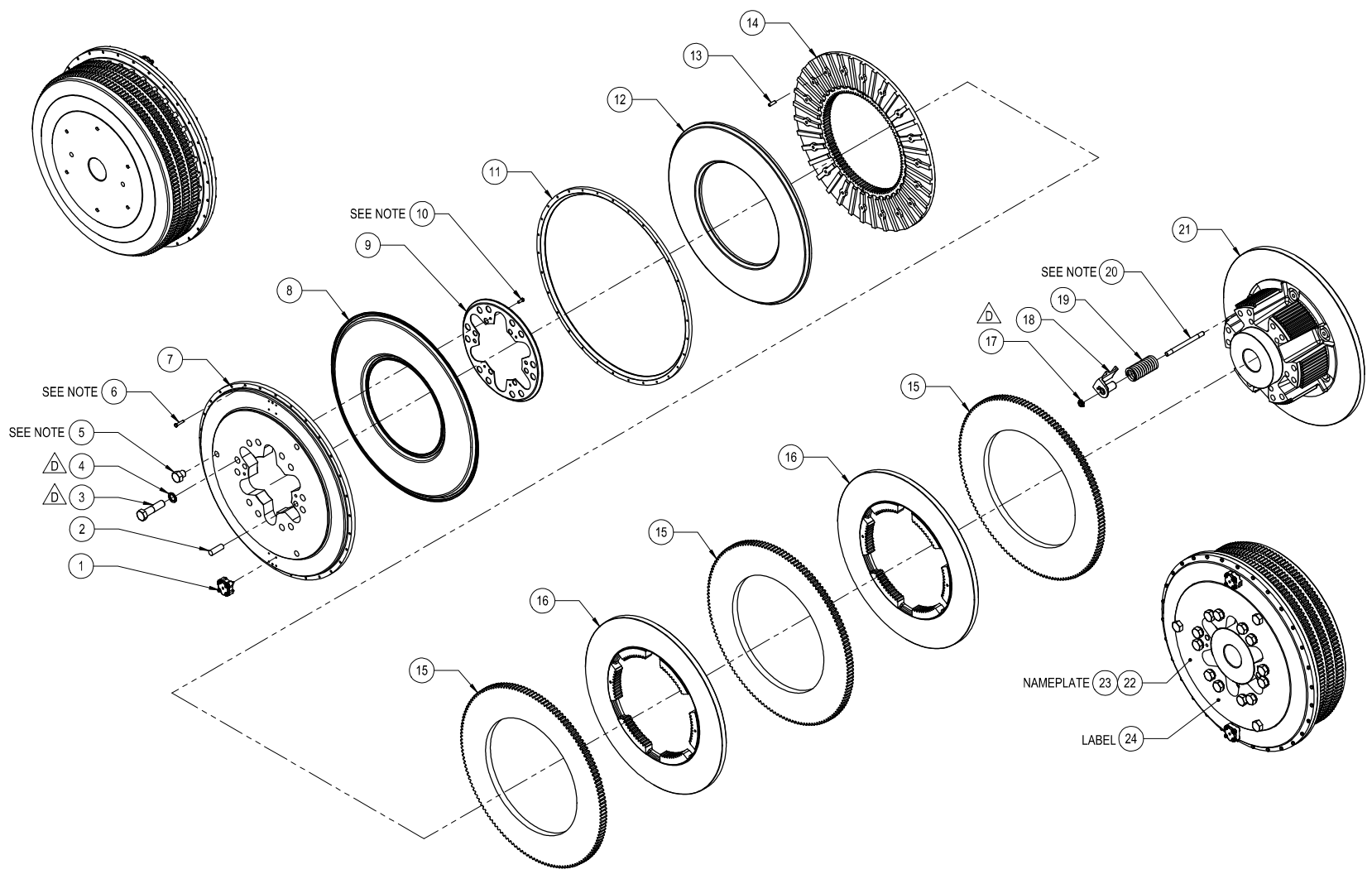
1 CLUTCH OPERATING CLEARANCE SHOULD BE  
 3/16" [4.76] MINIMUM

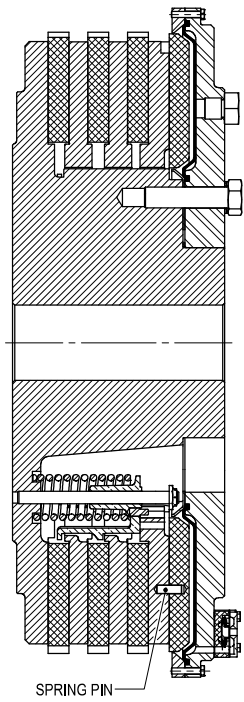
**COMPLETE ASSEMBLY**  
 EST WT = 2440 lb [1110 kg]  
 EST WR<sup>2</sup> = 2750 lb-ft<sup>2</sup> [116 kg-m<sup>2</sup>]

**FRICION DISC**  
 EST WT = 189 lb [85.6 kg]  
 EST WR<sup>2</sup> = 316 lb-ft<sup>2</sup> [13.3 kg-m<sup>2</sup>]

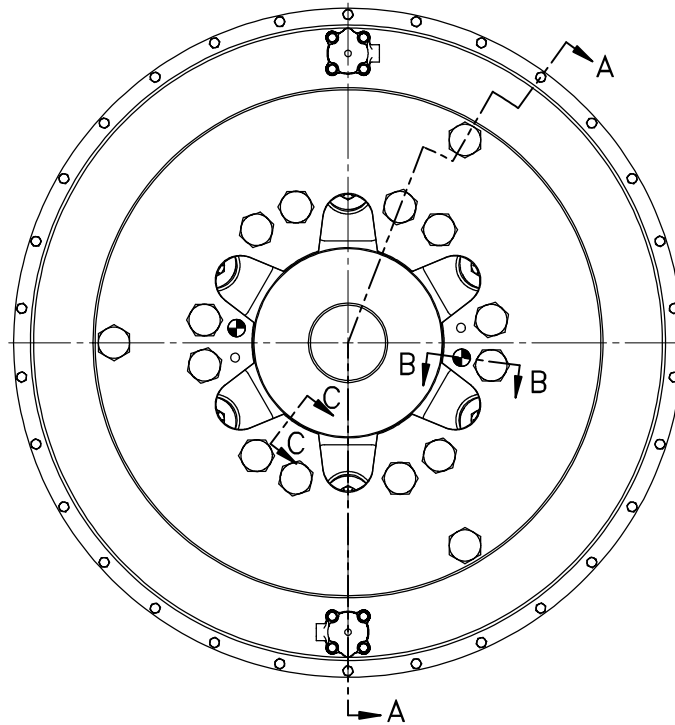
**HUB BORE SIZE:**  
 Ø4.50 [Ø114.30] MINIMUM  
 Ø7.75 [Ø196.85] MAXIMUM







SECTION A-A



6 10 APPLY LOCTITE 242 OR EQUAL

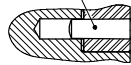
5 APPLY LOCTITE 567 OR EQUAL

20 APPLY LOCTITE 271 OR EQUAL  
TO COARSE THREAD END ONLY

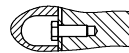
SEE INSTALLATION MAINTENANCE  
MANUAL FOR TORQUE



TAPERED DOWEL PIN



SECTION B-B



SECTION C-C