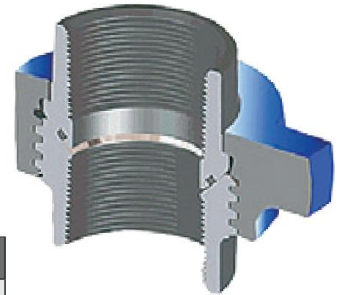


Figure 206

Figure 206 has an O-Ring Seal added to the Male Sub, which functions as a secondary seal. Subs and Nuts of the Figure 206 union are interchangeable with the Figure 200 and other manufacturers' parts. Recommended for water, oil or gas service up to 2,000 PSI NSCWP.



Standard Service		H2S Service	
NSCWP	Test	NSCWP	Test
2,000 PSI	3,000 PSI	2,000 PSI	3,000 PSI

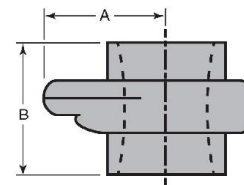
*All Working Pressures are Non-shock Cold Working Pressure Ratings (NSCWP)
Viton® O-Rings required for H2S Service and are available upon request

Figure 206 Threaded Color Code: Gray Subs/Blue Nut

Nominal Pipe Size	1"	1 1/4"	1 1/2"	2"	2 1/2"	3"	4"	6"	8"	10"
Qty. / Box Part No.	40 U260100	30 U261200	30 U260500	16 U260200	8 U262500	6 U260300	4 U260400	1 U260600	1 U260800	1 U261000
Clearance Radius (A)	1.87"	2.50"	3.00"	2.91"	3.66"	3.96"	4.53"	6.125"	7.70"	8.98"
End to End Threaded (B)	2.65"	2.78"	4.875"	3.94"	4.31"	4.50"	5.08"	6.75"	7.31"	9.11"
Weight (lbs)	2.05	3.20	3.27	6.13	10.88	14.66	20.00	47.00	68.00	100.00
Material, Sub Material, Nut	A105 A105	A105 A395 D.I.	A105 A395 D.I.	A105 A105	A105 A395 D.I.	A105 A105	A105 A105	A105 A105	A105 A216 WCB	A216 WCB A216 WCB

Figure 206 Butt Weld Schedule 40 and 80 Color Code: Gray Subs/Blue Nut

Nominal Pipe Size	2"	3"	4"	6"	8"	10"
Qty. / Box Part No.	16 *	6 *	4 *	1 *	1 *	1 *
Clearance Radius (A)	2.91"	3.96"	4.53"	6.125"	7.70"	8.98"
End to End (B)	3.81"	4.57"	5.03"	6.75"	7.31"	9.25"
Weight (lbs)	6.63	15.67	22.00	52.00	78.00	108.00
Material, Sub Material, Nut	A105 A105	A105 A105	A105 A105	A105 A105	A105 A216 WCB	A216 WCB A216 WCB



*Part numbers vary per butt weld schedule
Also available in Socket Weld

