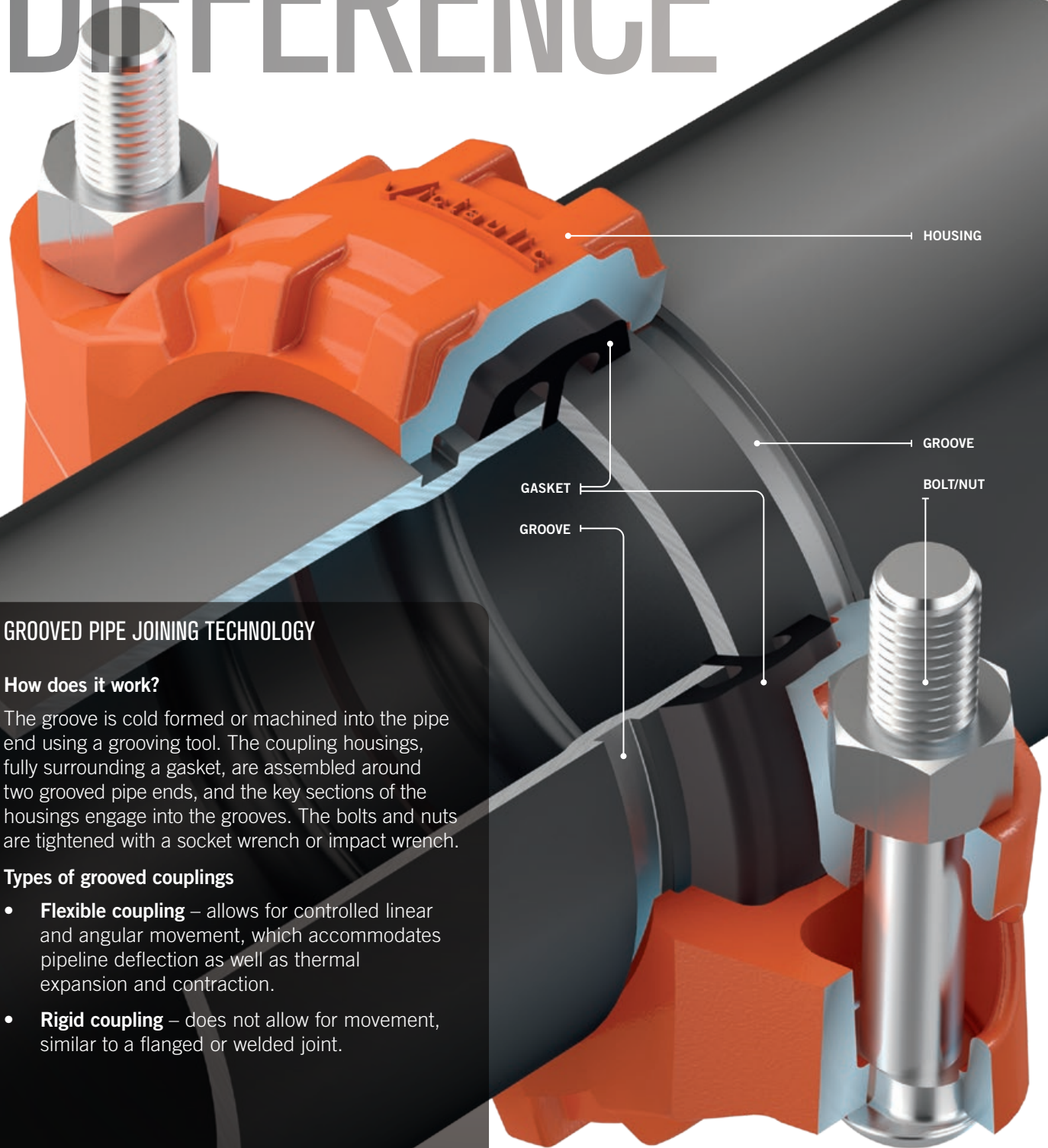


GENERAL CATALOG

Effective March 2020



THE VICTAULIC® DIFFERENCE



GROOVED PIPE JOINING TECHNOLOGY

How does it work?

The groove is cold formed or machined into the pipe end using a grooving tool. The coupling housings, fully surrounding a gasket, are assembled around two grooved pipe ends, and the key sections of the housings engage into the grooves. The bolts and nuts are tightened with a socket wrench or impact wrench.

Types of grooved couplings

- **Flexible coupling** – allows for controlled linear and angular movement, which accommodates pipeline deflection as well as thermal expansion and contraction.
- **Rigid coupling** – does not allow for movement, similar to a flanged or welded joint.

At the core of all of the benefits that Victaulic® [solutions](#) bring to a project – such as productivity, safety, design flexibility and quality – are the unique features of our products.

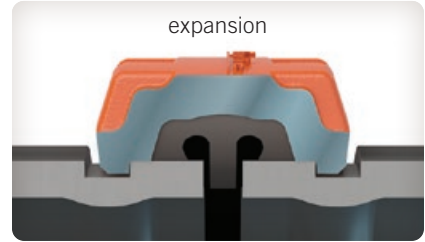
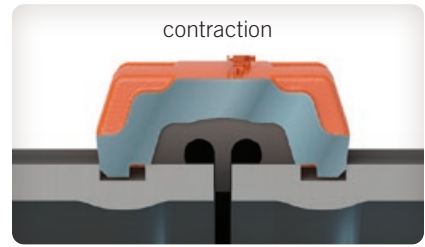
VICTAULIC GROOVED END PIPING SYSTEMS PROVIDE:



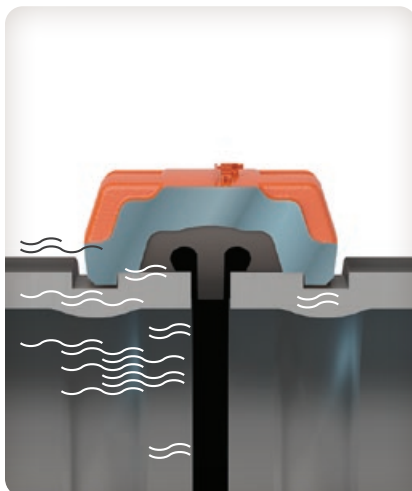
Easy system maintenance and expansion – through simple coupling disassembly that allows for easy access.



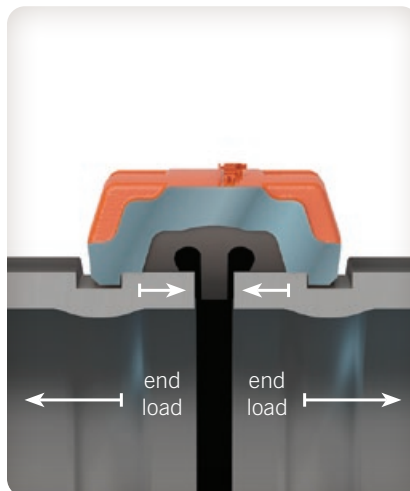
Alignment ease – through a design that allows for full rotation of the pipe and system components before tightening.



Flexibility – with the inherent axial movement and deflection properties of flexible couplings in a groove system. May be used to accommodate pipeline thermal expansion and contraction, misalignment and settlement, and seismic stresses.



Noise and vibration attenuation – by isolating the transference of vibration at each joint.



Self restrained pipe joints – couplings engage the pipe grooves to hold the pipes against full pressure thrust loads without the need for supplemental restraints.



Rigidity – with an angled bolt pad design that provides positive clamping of the pipe to resist torsional and flexural loads.

Original Groove System (OGS)

INSTALLATION-
READY™

Certifications/Listings:



[Download publication 10.01](#) for Fire Protection Certifications/Listings

QuickVic™ Rigid Coupling

STYLE 107N

[Download publication 06.23](#) for complete information

- Angled bolt pad housing design provides rigidity
- Sizes from 2–12" | DN50–DN300
- Pressures up to 750 psi | 5171 kPa | 52 bar
- [Download publication 17.01](#) for applications in stainless steel systems
- [Download publication 21.04](#) for applications in aluminum systems

INSTALLATION-
READY™

Certifications/Listings:



[Download publication 10.01](#) for Fire Protection Certifications/Listings

QuickVic™ Flexible Coupling

STYLE 177N

[Download publication 06.24](#) for complete information

- Flexible pipe joint which allows for expansion, contraction and deflection
- Sizes from 2–8" | DN50–DN200
- Pressures up to 1000 psi | 6895 kPa | 69 bar
- [Download publication 17.01](#) for applications in stainless steel systems
- [Download publication 21.04](#) for applications in aluminum systems
- [Download publication 32.01](#) for applications in PVC systems



Certifications/Listings:



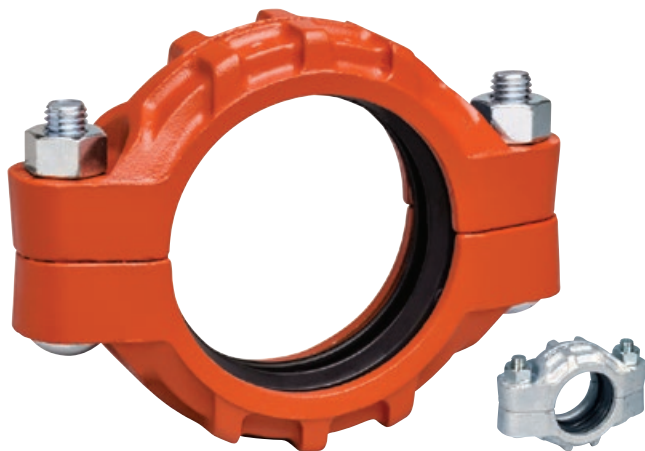
[Download publication 10.01](#) for Fire Protection Certifications/Listings

Zero-Flex™ Rigid Coupling

STYLE 07

[Download publication 06.02](#) for complete information

- Angled bolt pad housing design provides rigidity
- Sizes from 1–12" | DN25–DN300
- Pressures up to 750 psi | 5171 kPa | 52 bar
- For sizes 14–50" | DN350–DN1250, [download publication 20.02](#) for information on AGS Style W07



Certifications/Listings:



[Download publication 10.01](#) for Fire Protection Certifications/Listings

Flexible Coupling

STYLE 77

[Download publication 06.04](#) for complete information

- Flexible pipe joint which allows for expansion, contraction and deflection
- Sizes from ¾–24" | DN20–DN600
- Pressures up to 1000 psi | 6895 kPa | 69 bar
- For sizes 14–78" | DN350–DN1950, [download publication 20.03](#) for information on AGS Style W77
- [Download publication 32.01](#) for applications in PVC systems
- [Download publication 21.01](#) for information on Style 77A for applications in aluminum systems



Certifications/Listings:



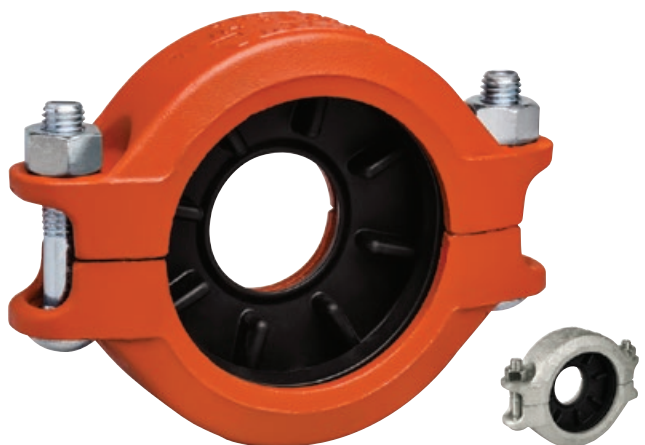
[Download publication 10.01](#) for Fire Protection Certifications/Listings

Flexible Coupling

STYLE 75

[Download publication 06.05](#) for complete information

- Lightweight coupling for moderate pressures
- Flexible pipe joint which allows for expansion, contraction and deflection
- Sizes from 1–8" | DN25–DN200
- Pressures up to 500 psi | 3447 kPa | 34 bar
- [Download publication 32.01](#) for applications in PVC systems



Certifications/Listings:



[Download publication 10.01](#) for Fire Protection Certifications/Listings

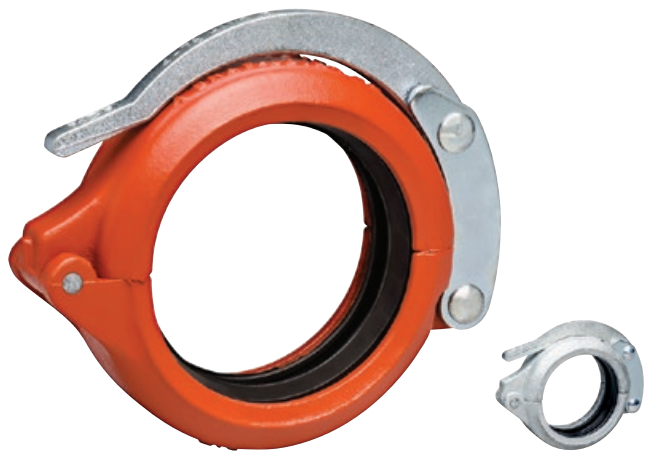
Reducing Coupling

STYLE 750

[Download publication 06.08](#) for complete information

- Replaces two couplings and a reducing fitting
- Sizes from 2–10" | DN50–DN250
- Pressures up to 500 psi | 3447 kPa | 34 bar

Original Groove System (OGS)



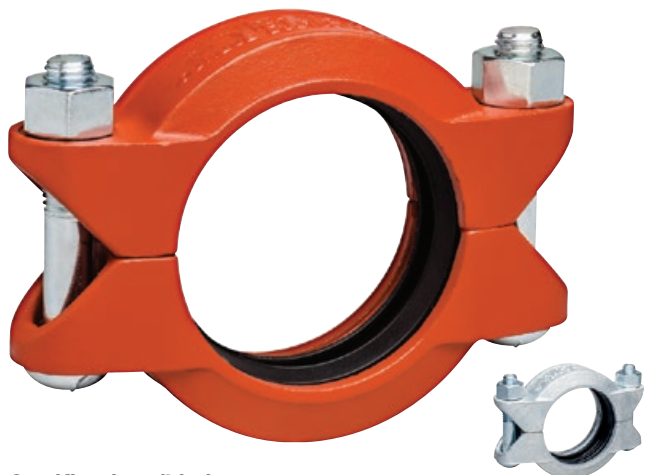
Snap-Joint™ Coupling

STYLE 78

[Download publication 06.09](#) for complete information

- Designed for quick disconnect service
- Sizes from 1–8" | DN25–DN200
- Pressures up to 300 psi | 2068 kPa | 21 bar
- [Download publication 21.02](#) for information on Style 78A for applications in aluminum systems

Certifications/Listings:



High Pressure Rigid Coupling

STYLE HP-70

[Download publication 06.12](#) for complete information

- Heavy housing for high pressure service
- Sizes from 2–16" | DN50–DN400
- Pressures up to 1000 psi | 6895 kPa | 69 bar

Certifications/Listings:



[Download publication 10.01](#) for Fire Protection Certifications/Listings



Fittings

[Download publication 07.01](#) for complete information on OGS grooved end fittings for carbon steel pipe

- Standard fitting pressure ratings conform to ratings of installed coupling
- All fittings supplied with grooves or shoulders for fast installation
- Fittings available from 3/4 – 24" | DN20 – DN600
- For AGS sizes 14 – 60" | DN350 – DN1500, [download publication 20.05](#) for complete information

Certifications/Listings:



[Download publication 10.01](#) for Fire Protection Certifications/Listings

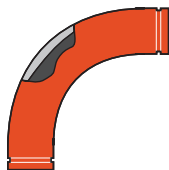
Elbows



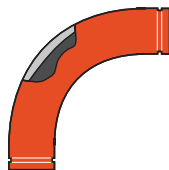
No. 10
90° Elbow



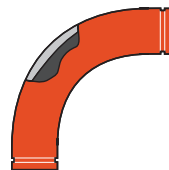
No. 100-1½D
90° 1½ D Long Radius Elbow



No. 100-3D
90° 3 D Long Radius Elbow



No. 100-5D
90° 5 D Long Radius Elbow



No. 100-6D
90° 6 D Long Radius Elbow

For 3D, 5D and 6D long radius bends, [download publication 07.02](#)



No. 11
45° Elbow



No. 110-1½D
45° 1½ D Long Radius Elbow



No. 110-3D
45° 3 D Long Radius Elbow



No. 110-5D
45° 5 D Long Radius Elbow



No. 110-6D
45° 6 D Long Radius Elbow

For Schedule 80 3D long radius cast ductile iron elbows, [download publication 07.12](#)



No. 12
22½° Elbow



No. 13
11¼° Elbow



No. 18
90° Adapter Elbows



No. 19
45° Adapter Elbows

For coating options, [download publication 07.01](#)



No. 10-DR
Drain Elbow



No. R-10G
Reducing Base Support Elbows (OGS Groove x OGS Groove)



No. R-10F
Reducing Base Support Elbows (OGS Groove x Flange)



Original Groove System (OGS)



Fittings

[Download publication 07.01](#) for complete information on OGS grooved end fittings for carbon steel pipe

- Standard fitting pressure ratings conform to ratings of installed coupling
- All fittings supplied with grooves or shoulders for fast installation
- Fittings available from $\frac{3}{4}$ –24" | DN20–DN600
- For AGS sizes 14–60" | DN350–DN1500, [download publication 20.05](#) for complete information

Certifications/Listings:



[Download publication 10.01](#) for Fire Protection Certifications/Listings

Tees, Crosses, Wyes, and Laterals



No. 20
Tee



No. 25
Grooved Branch
Reducing Tee



No. 29M
Tee with
Threaded Branch



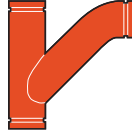
No. 29T
Threaded Branch
Reducing Tee



No. 30
45° Lateral



No. 30-R
45° Reducing
Lateral



No. 32
Tee Wye



No. 32-R
Reducing
Tee Wye



No. 33
True Wye



No. 35
Cross



Fittings

[Download publication 07.01](#) for complete information on OGS grooved end fittings for carbon steel pipe

- Standard fitting pressure ratings conform to ratings of installed coupling
- All fittings supplied with grooves or shoulders for fast installation
- Fittings available from ¾–24" | DN20–DN600
- For AGS sizes 14–60" | DN350–DN1500, [download publication 20.05](#) for complete information

Certifications/Listings:



[Download publication 10.01](#) for Fire Protection Certifications/Listings

Adapters, Nipples, Caps and Plugs

No. 40 Adapter Nipple (OGS Groove x Thread)	No. 41 ANSI Class 125 Flanged Adapter Nipple	No. 41-DN PN10/16 Flanged Adapter Nipple	No. 42 Adapter Nipple (OGS Groove x Bevel)	No. 43 Adapter Nipple (OGS Groove x OGS Groove)	
No. 45F ANSI Class 150 Flat Face Flanged Adapter Nipple	No. 45FE PN10/16 Flat Face Flanged Adapter Nipple	No. 45R ANSI Class 150 Raised Face Flanged Adapter Nipple	No. 45RE PN10/16 Raised Face Flanged Adapter Nipple	No. 46F ANSI Class 300 Flat Face Flanged Adapter Nipple	No. 46R ANSI Class 300 Raised Face Flanged Adapter Nipple
No. 48 Hose Nipple	No. 50 Concentric Reducer	No. 51 Eccentric Reducer	No. 52 Small Threaded Reducer	No. 53 Swaged Nipple (OGS Groove x OGS Groove)	No. 54 Swaged Nipple (OGS Groove x Thread)
No. 55 Swaged Nipple (Thread x OGS Groove)	No. 60 Cap	No. 61 Bull Plug	No. 80 Female Threaded Adapter		



Dynamic Movement Joint

STYLE 257

[Download publication 09.17](#) for complete information

- M11 Compliant assembly built to accommodate dynamic movement up to 4" | 102 mm including differential settlement, seismic and thermal movement
- Sizes from 2–12" | DN50–DN300 carbon steel pipe
- Working pressure is equal to the Style 77 coupling on equivalent wall thickness pipe, [download publication 06.04](#) for complete information



Certifications/Listings:



[Download publication 10.01](#) for Fire Protection Certifications/Listings

Vic-300™ MasterSeal™ Butterfly Valve

SERIES 761

[Download publication 08.20](#) for complete information

- Designed for bi-directional, dead end services to full working pressure
- Multiple seat, disc material and handle options available
- Sizes from 2–12" | DN50–DN300
- Pressures up to 300 psi | 2068 kPa | 21 bar
- For AGS sizes 14–24" | DN350–DN600, [download publication 20.06](#) for information on Series W761



Certifications/Listings:



[Download publication 10.01](#) for Fire Protection Certifications/Listings

Butterfly Valve

SERIES 700

[Download publication 08.05](#) for complete information

- Two-piece stem permits narrow disc design for low pressure drop performance
- Supplied standard with aluminum bronze disc, 316 stainless steel optional
- Sizes from 1½–6" | DN40–DN150
- Pressures up to 200 psi | 1379 kPa | 14 bar

Original Groove System (OGS)

**Vic-Ball Valve**

SERIES 726

[Download publication 08.23](#) for complete information

- High pressure standard port NACE MR-01-75-compliant ball valve
- Available without a handle, or with a lever or gear operator
- Sizes from 1½–6" | DN40–DN150
- Pressures up to 1000 psi | 6895 kPa | 69 bar

Certifications/Listings:
[Download publication 10.01](#) for Fire Protection Certifications/Listings
**Ball Valve**

SERIES 727

[Download publication 08.42](#) for complete information

- High pressure enhanced port NACE MR-01-75-compliant ball valve
- Up to ⅓ better flow than competitive standard port ball valves
- Floating ball with standard port, reduces torque requirements
- Sizes from 2–6" | DN50–DN150
- Pressures up to 1500 psi | 10342 kPa | 103 bar

**Brass Body Ball Valve — Threaded**

SERIES 722

[Download publication 08.15](#) for complete information

- Standard port, female threaded end valve constructed from forged brass
- Sizes from ¼–2" | DN8–DN50
- Pressures up to 600 psi | 4137 kPa | 41 bar

Certifications/Listings:
[Download publication 10.01](#) for Fire Protection Certifications/Listings